



surin sands



Sensational boutique residence



## Ⓢ SURIN SANDS

Surin Sands is an attractive and sensational suite boutique condominium, nestled in a lush tropical environment just a short walking distance to two of Phuket's most spectacular beaches where you can bury your toes in the sand as you bask in the warmth of the sunlight and take in the fresh ocean air.

Relax in our contemporary rooms designed to welcome you with island leisure and elegance, ideal for any frequent traveler seeking convenience and opulence.

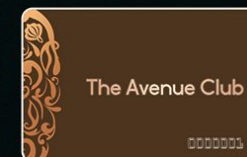
Surin Sands brings an upscale, yet unpretentious getaway to life; make memories of your own as you embrace the tropical tranquility that flows throughout our intimate oasis.

Let your senses ignite; relax and enjoy your well deserved stay in tropical paradise.



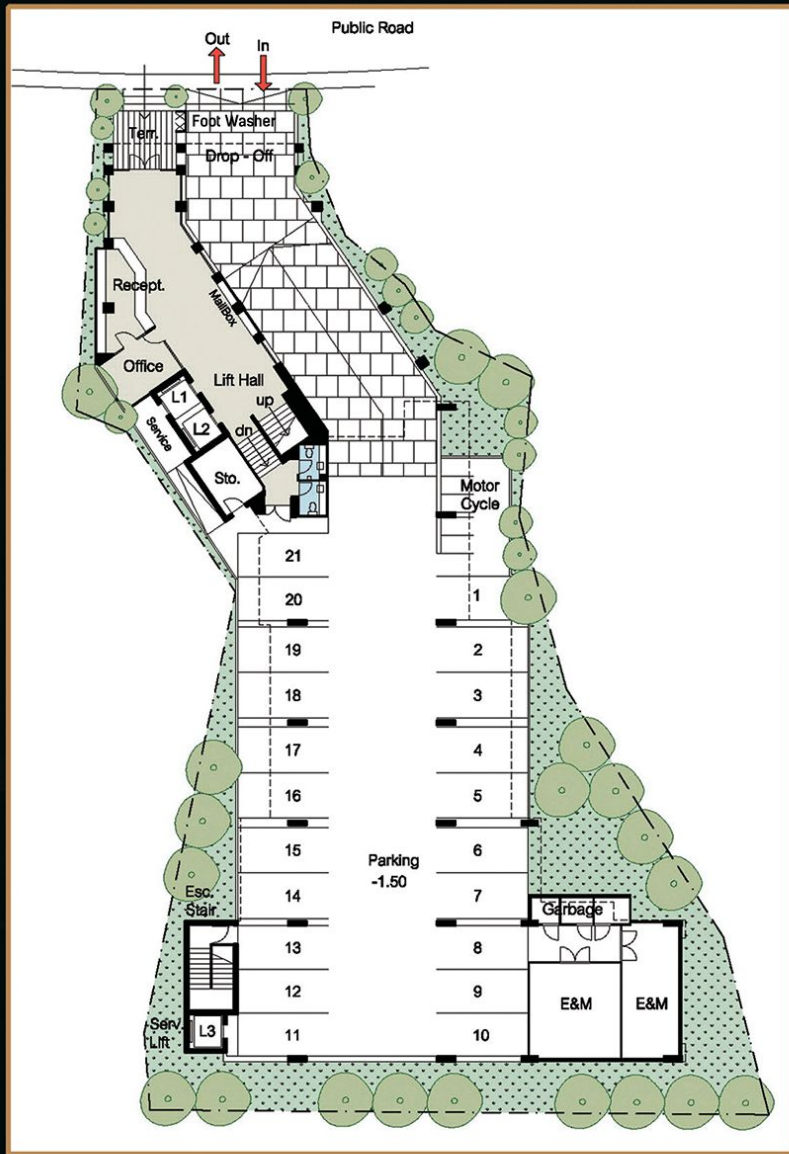
## © FACILITIES ©

- RECEPTION / LOBBY AREA / FOOT WASHER
- COVERED CARPARK WITH FULL SECURITY
- SMART CARD ACCESS & CCTV THROUGHOUT
- ROOFTOP INFINITY EDGE POOL
- FULLY SERVICED ROOFTOP RESTAURANT / BAR
- FULLY EQUIPPED GYM / KIDS CLUB
- THE AVENUE CLUB MEMBERSHIP





surin sonds

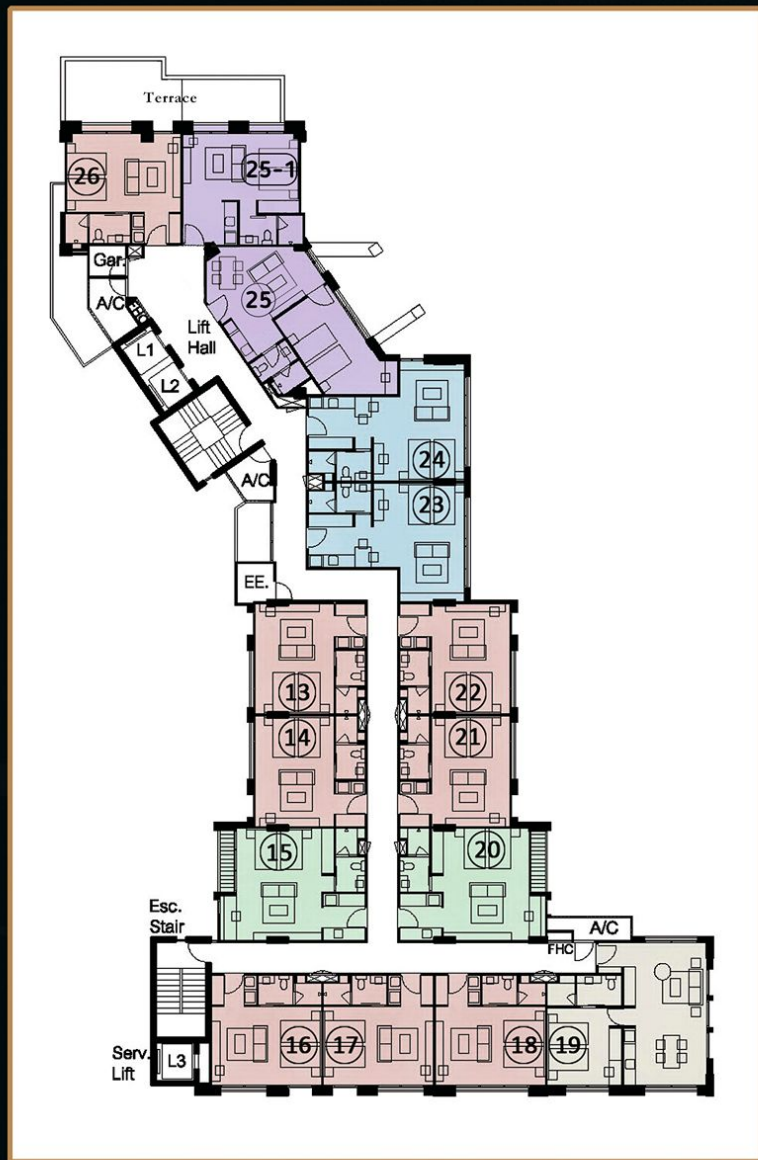


Ⓢ GROUND FLOOR PLAN

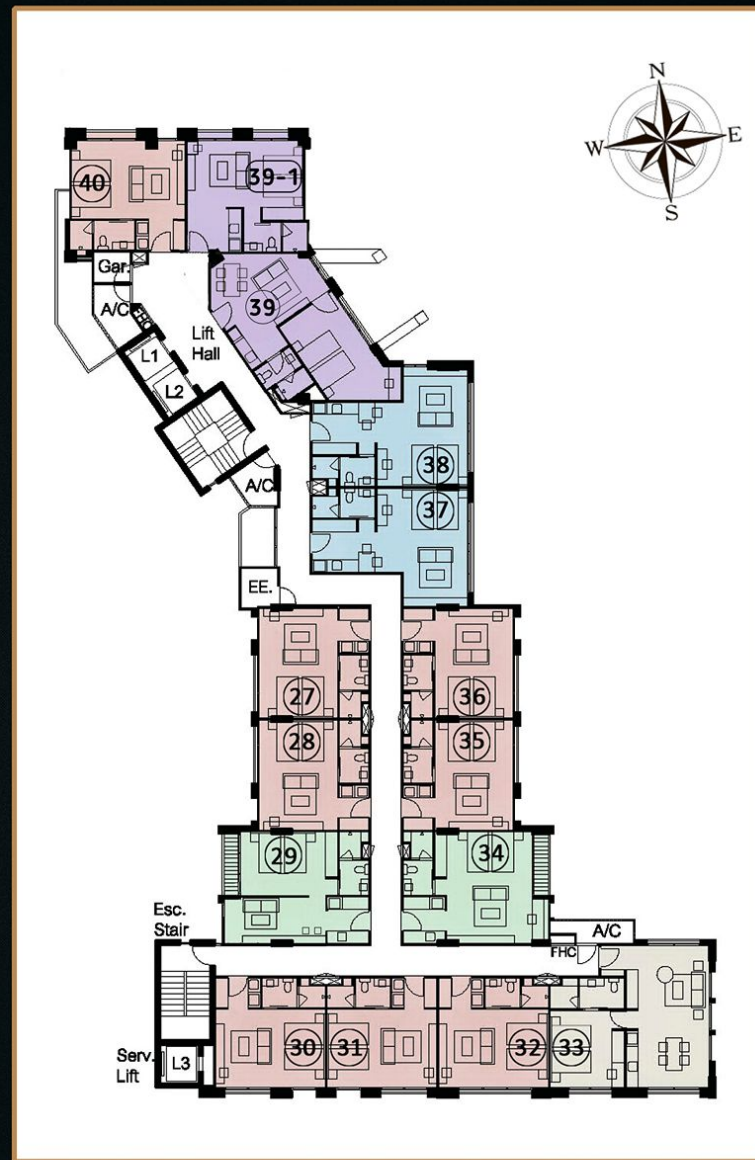


Ⓢ 2<sup>ND</sup> FLOOR PLAN

A	30 SQM.
B	38 SQM.
C	40 SQM.
D	51 SQM.
E	78 SQM.

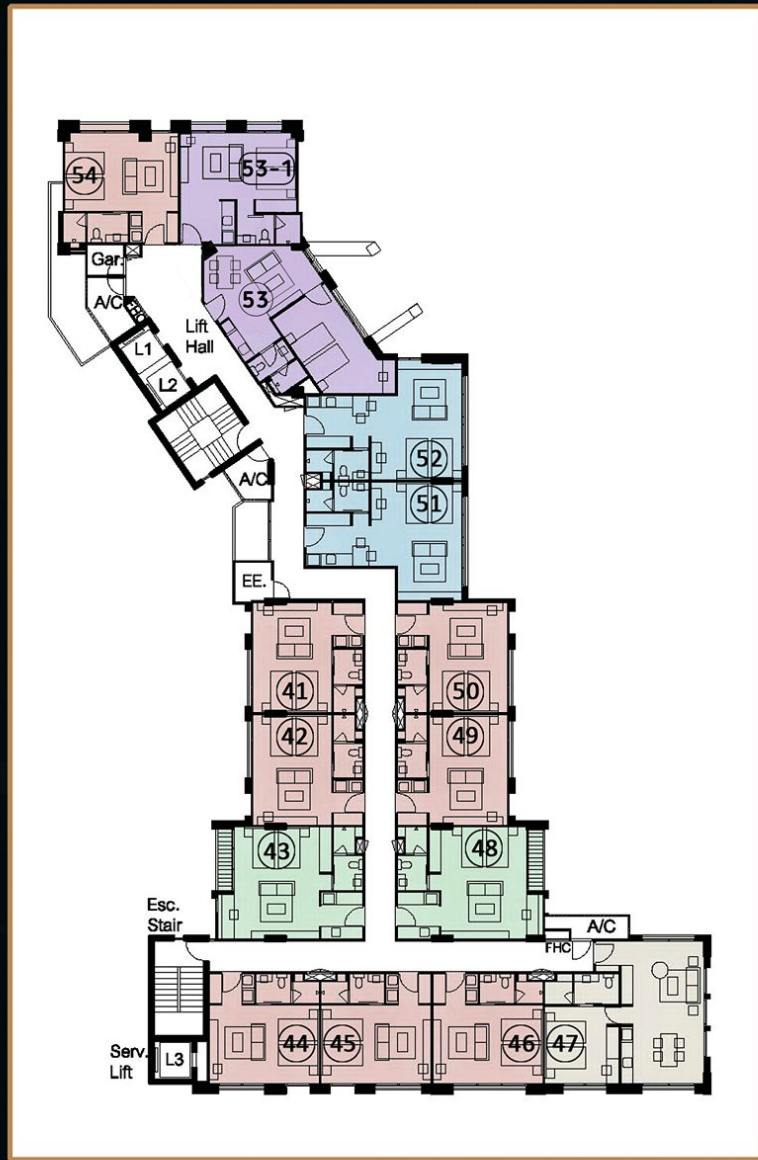


3<sup>RD</sup> FLOOR PLAN

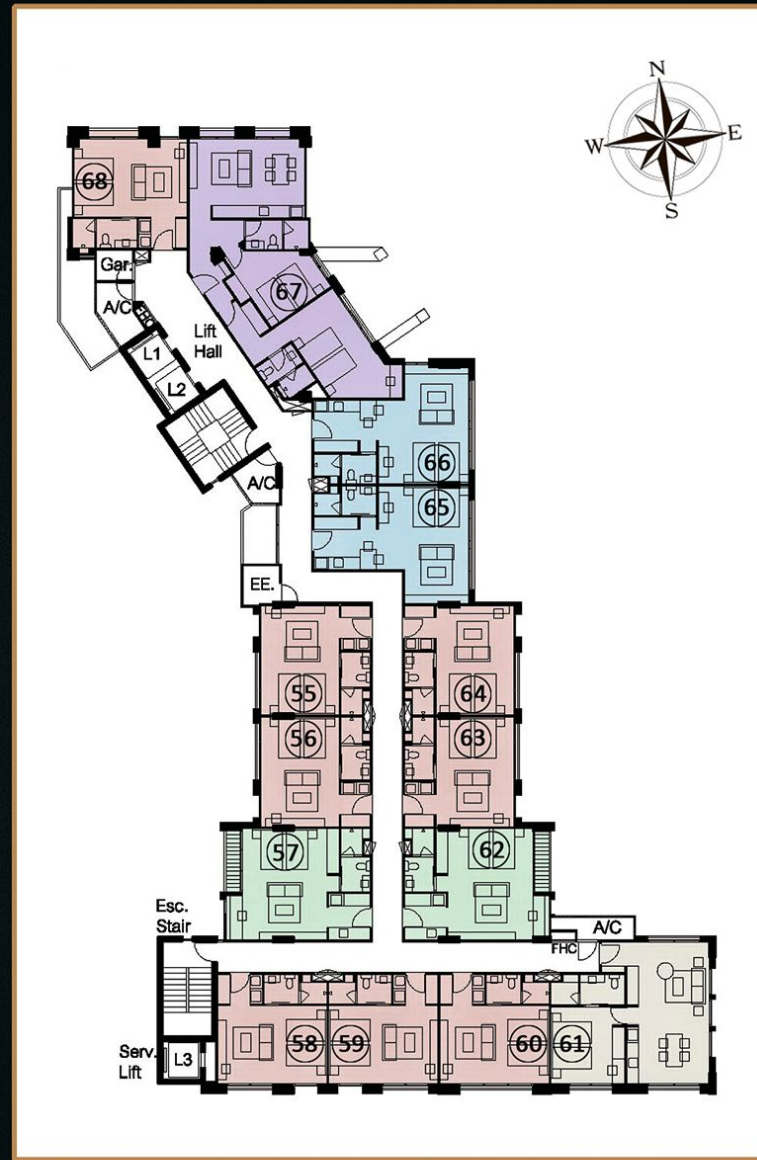


4<sup>TH</sup> FLOOR PLAN

A	30 SQM.
B	38 SQM.
C	40 SQM.
D	51 SQM.
E	78 SQM.

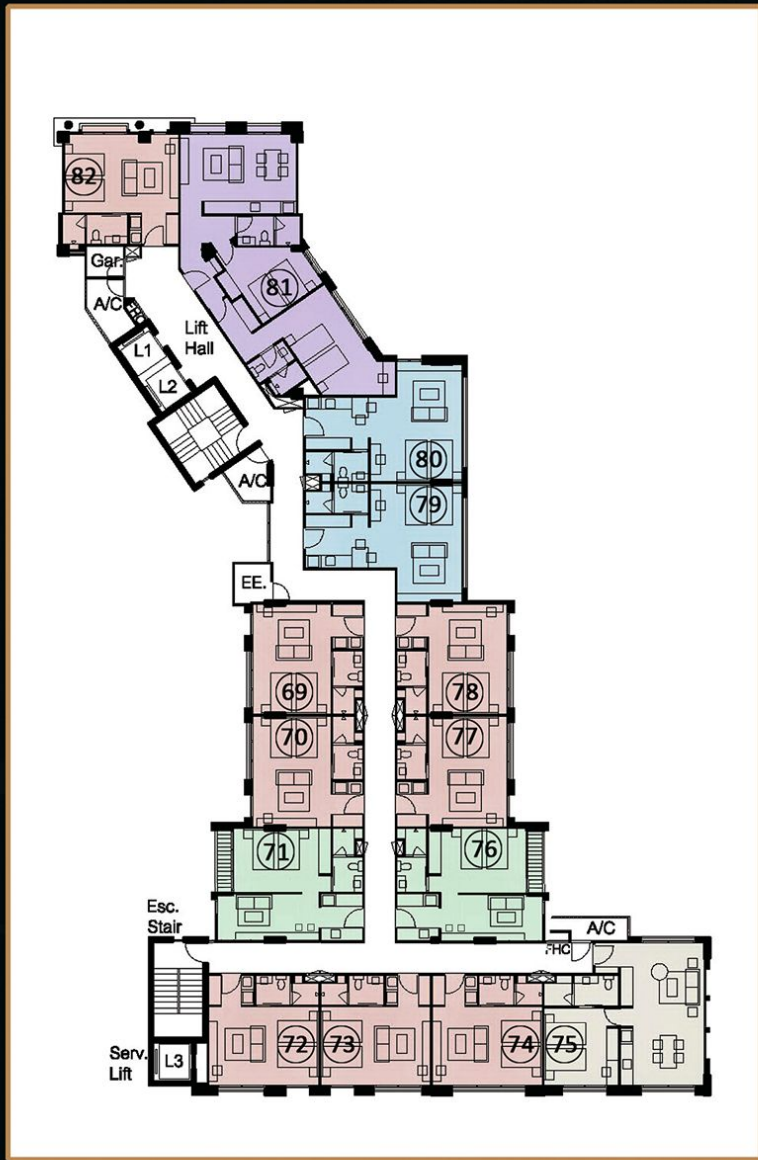


5<sup>TH</sup> FLOOR PLAN

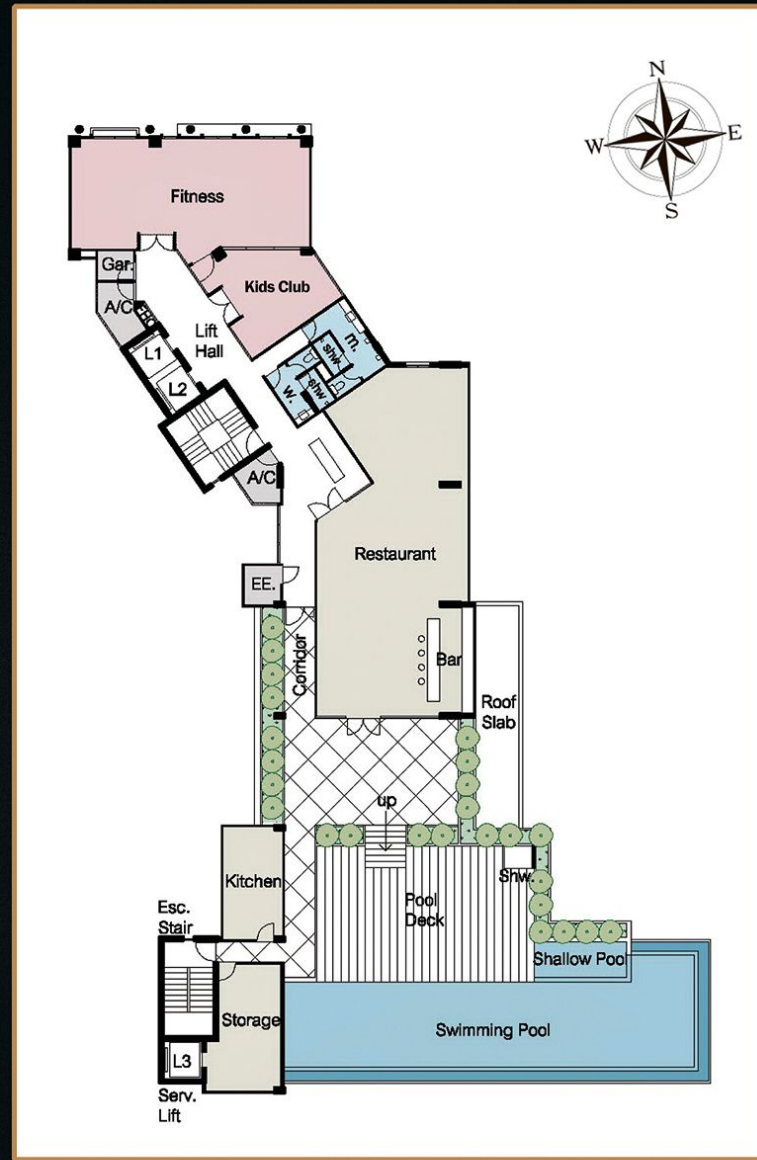


6<sup>TH</sup> FLOOR PLAN

A	30 SQM.
B	38 SQM.
C	40 SQM.
D	51 SQM.
E	78 SQM.



7<sup>TH</sup> FLOOR PLAN



ROOFTOP FLOOR PLAN

A	30 SQM.
B	38 SQM.
C	40 SQM.
D	51 SQM.
E	78 SQM.

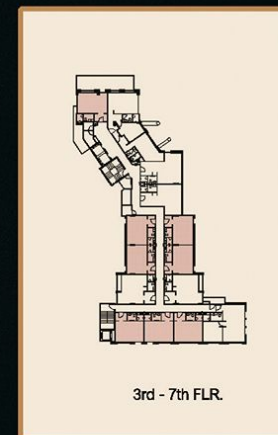
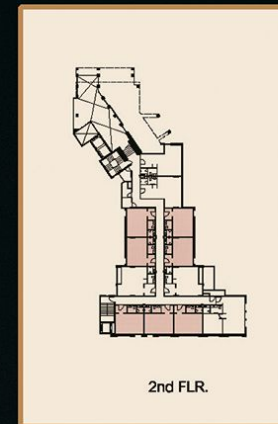
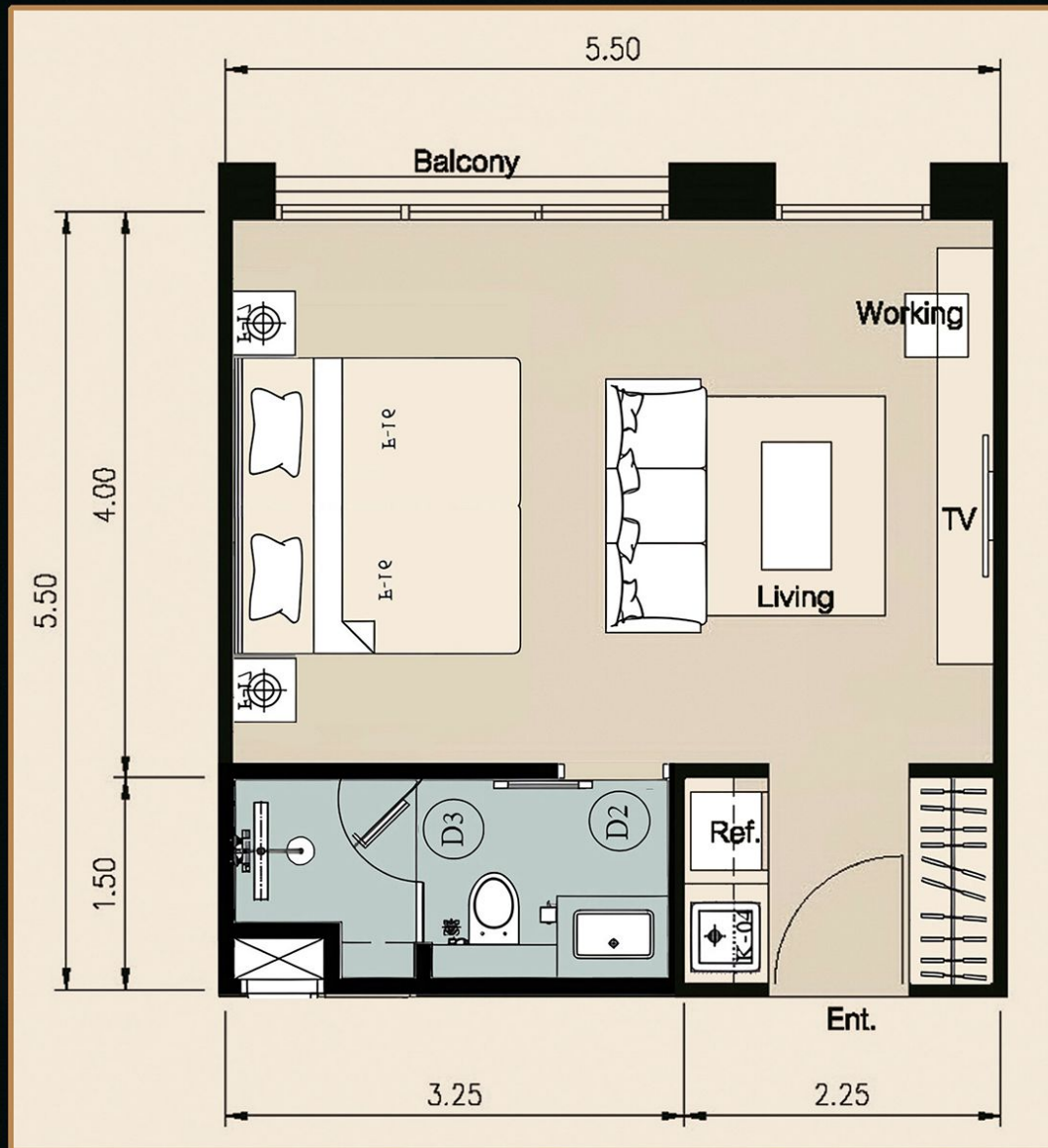


© TYPE A INTERIORS

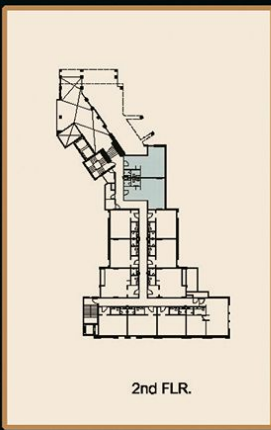
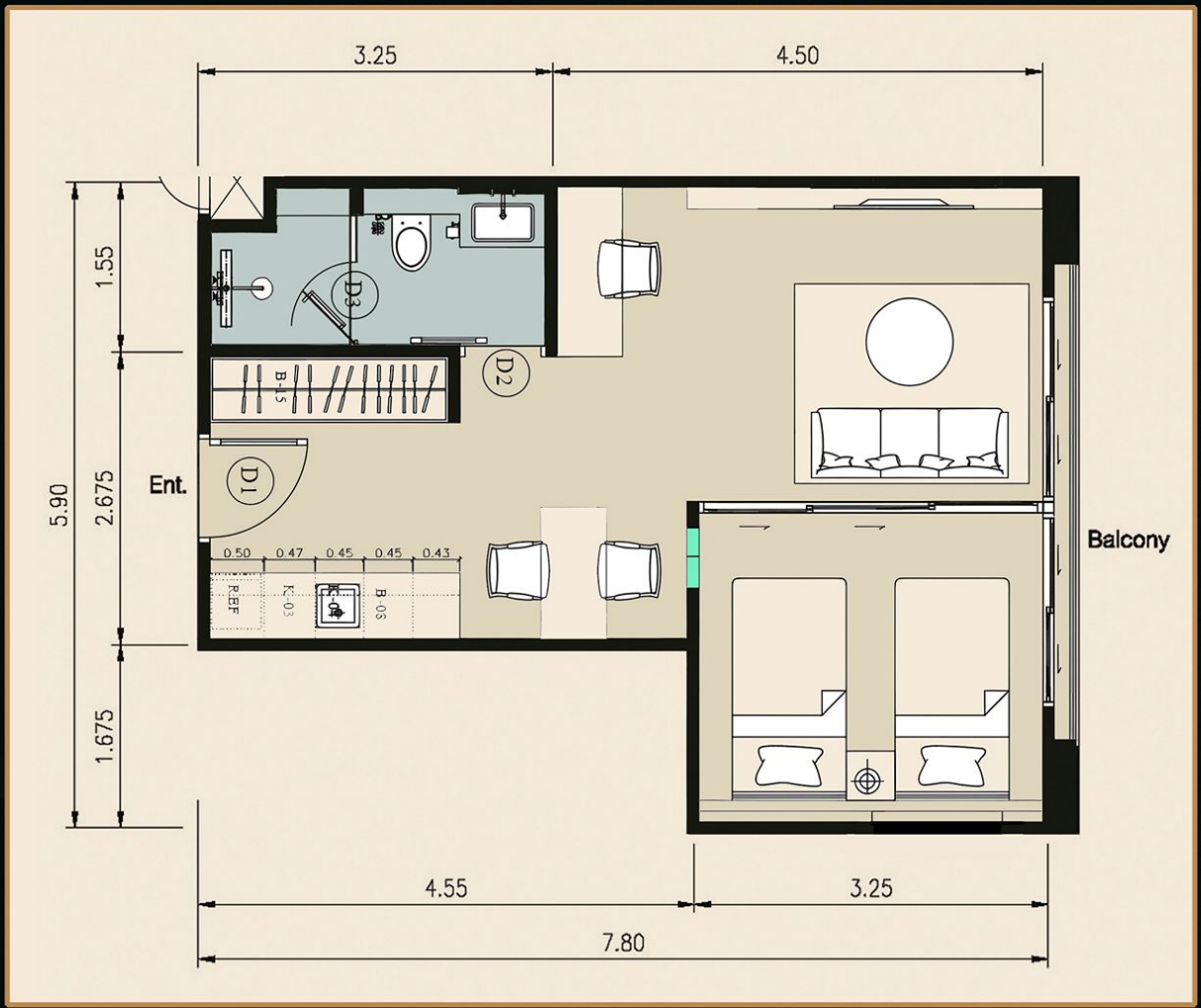




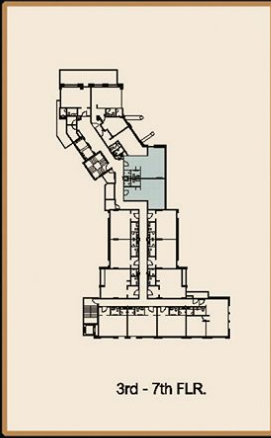
© TYPE D INTERIORS



© LAYOUT TYPE - A 30 SQ.M.



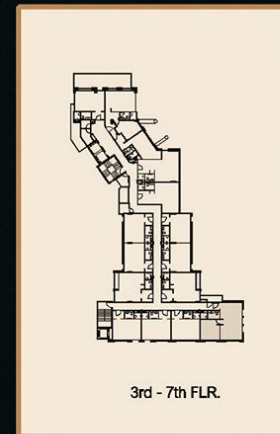
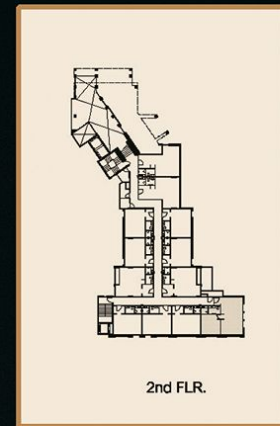
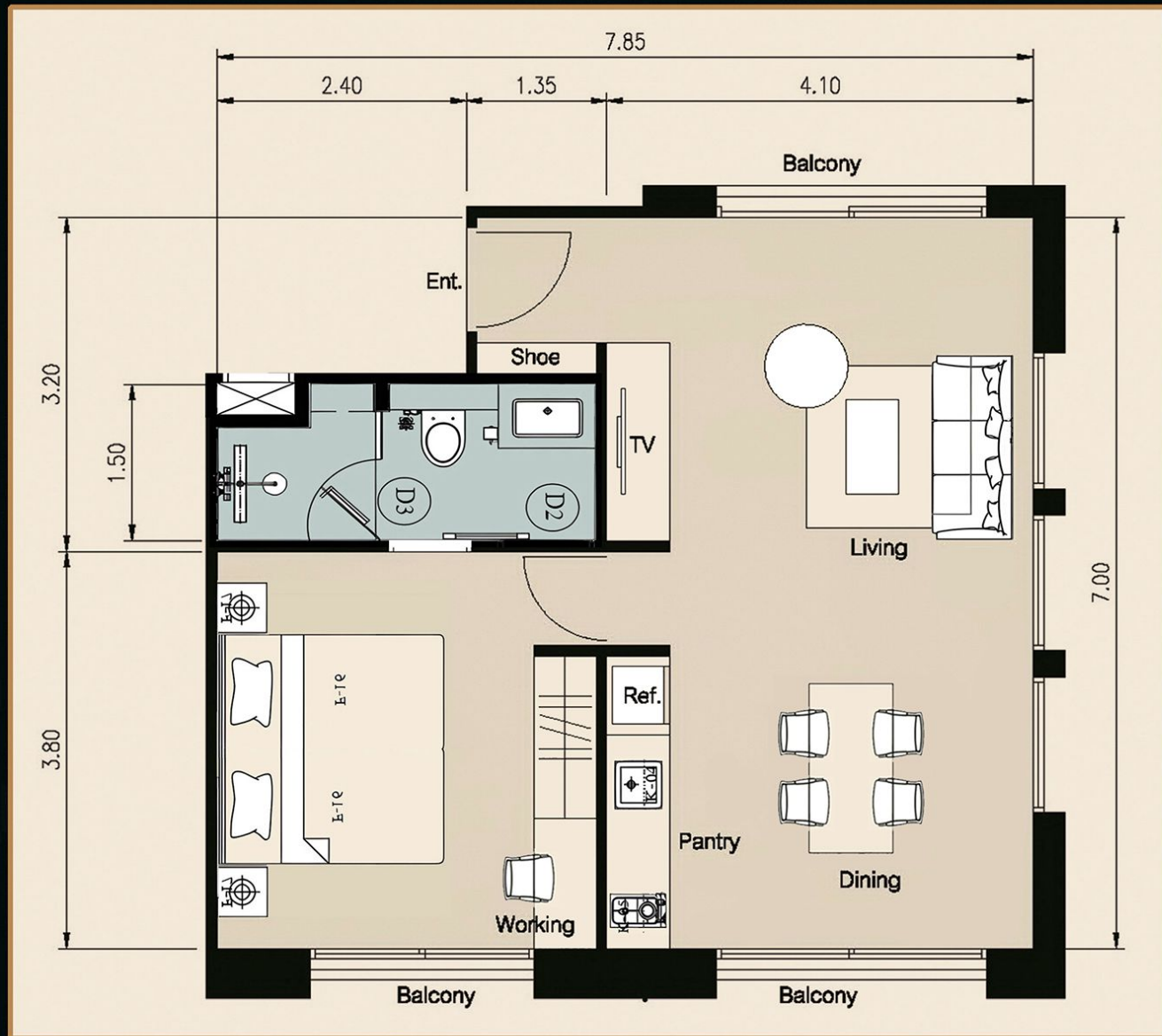
2nd FLR.



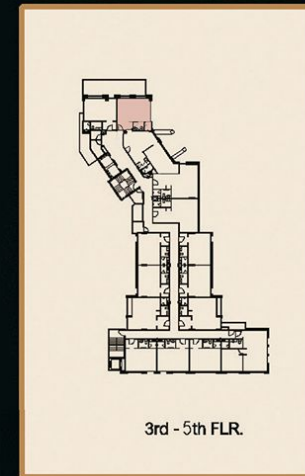
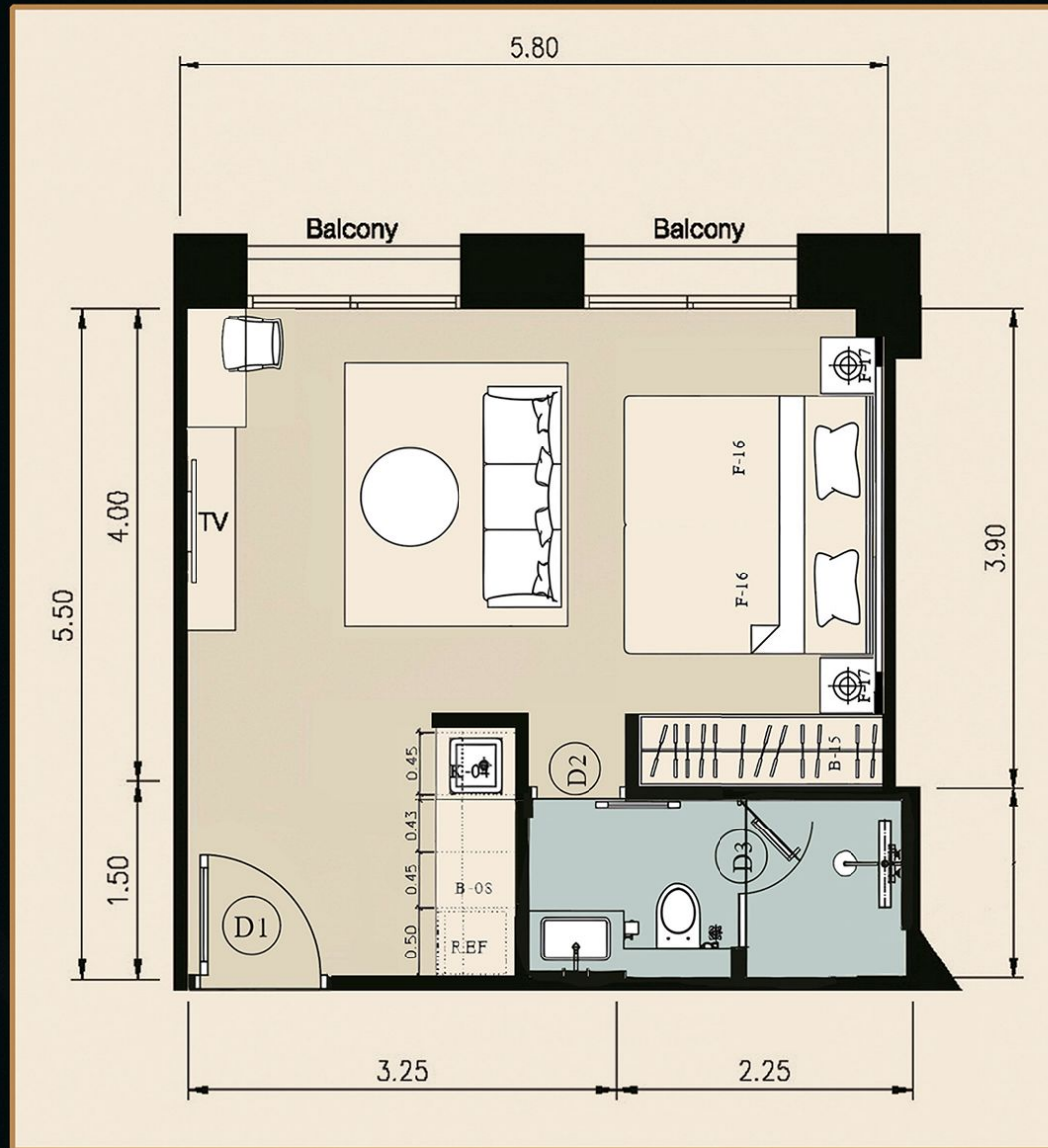
3rd - 7th FLR.

© LAYOUT TYPE - B 38 SQ.M.

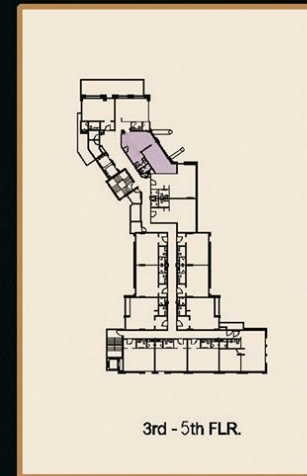
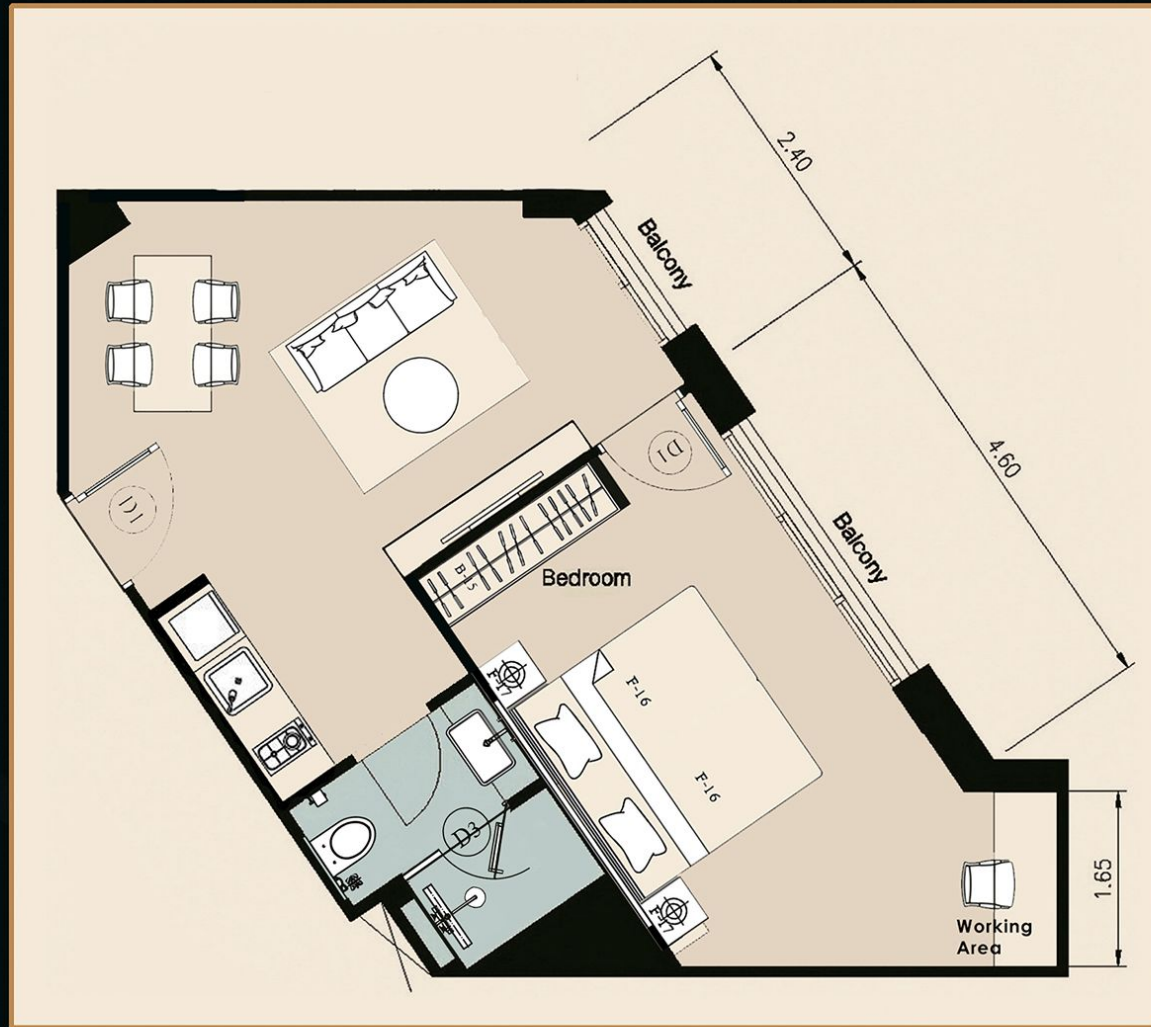




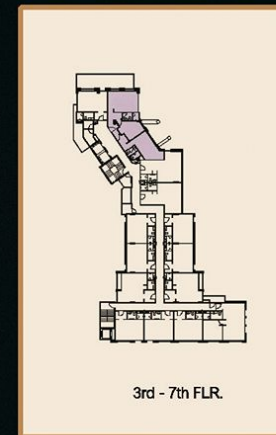
© LAYOUT TYPE - D 51 SQ.M.



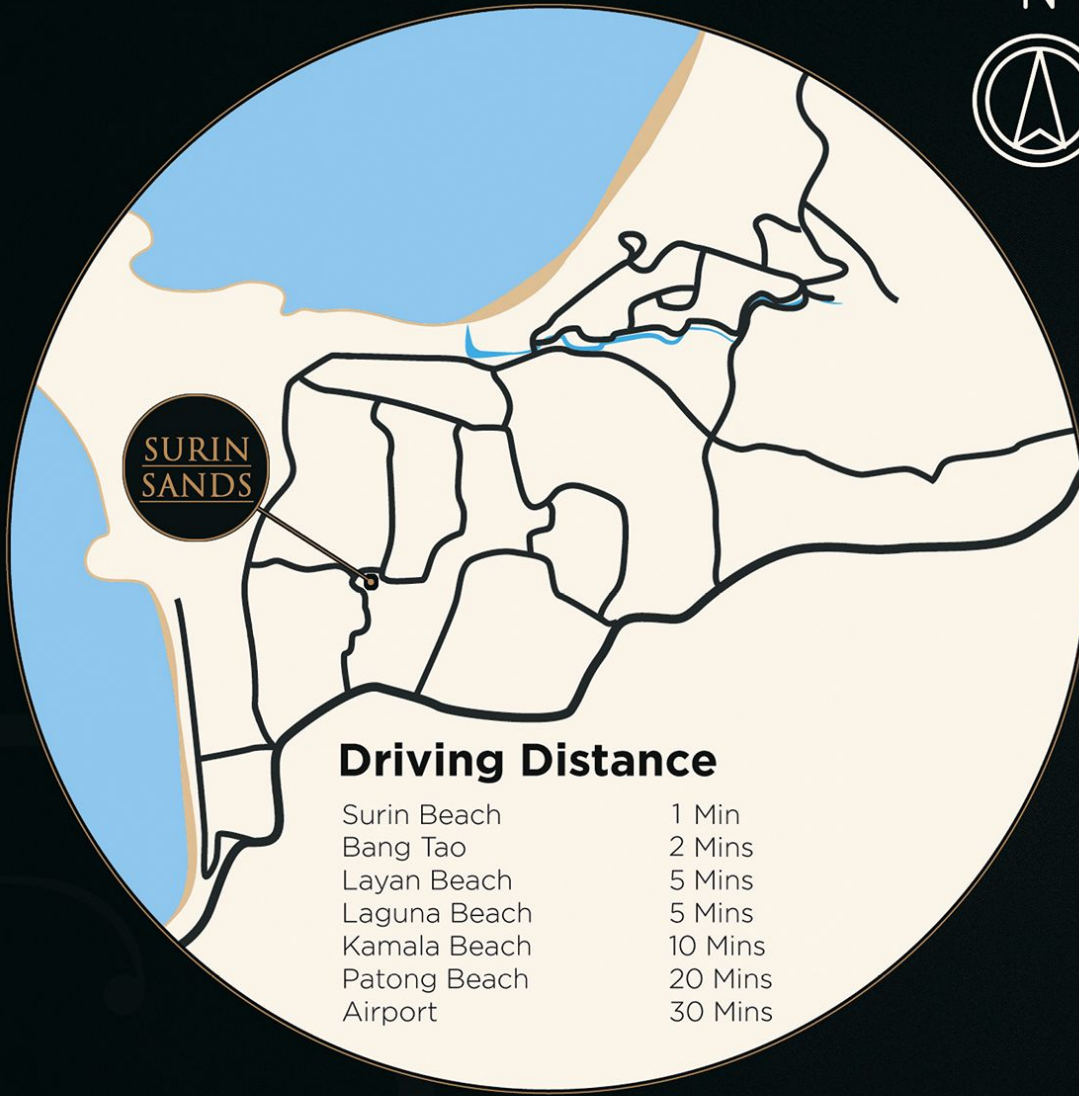
© LAYOUT TYPE - E-1 30 SQM



© LAYOUT TYPE - E-2 48 SQ.M



© LAYOUT TYPE - E 78 SQ.M.



© LOCATION MAP

# S SURIN SANDS

Raw material are at the HEART of our collections valuing the concept of intentional living. Our Building sure to use long-lasting natural substitute materials to inspire and engage in a sustainable way of life.

## WALL

TEXCA (Thai expended clay aggregate) is a kind of aggregate materials that is lightweight but higher in strength when compared to other aggregate materials. Due to its high firing temperature of 1250°C, TEXCA has the strength of ceramic but is light in weight.

TEXCA aggregate possesses unique properties such as light weight, high strength, thermal insulation, sound absorption and fire resistance. In addition,



## FLOOR



Only Premium Suppliers.  
Keeping it simple for classy

- Porcelain Tile
- Fireproof
- Waterproof
- Excellent impact resistance
- Scratch resistance
- Comfortable foot feels
- Helps keep your room at a cooler temperature

## COLOR PAINT

Nippon Paint Aircare

- Anti Virus & Bacteria
- Leed & Well.
- Silver ION Technology
- Green choice
- Best cover



## FURNITURE

Make your interior

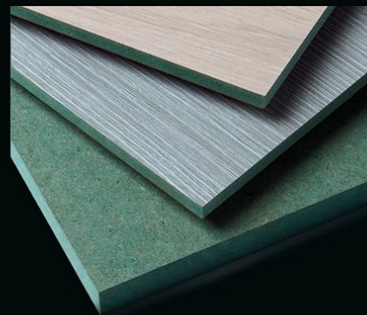


(High Moisture Resistance board)

HMR wood is made for use in areas with high humidity such as kitchen area Or the dry section of the bathroom and HMR wood has passed the EN 317 standard. The testing process is to soak HMR wood in water for 24 hours.

The result is HMR wood swelling slightly, about <6%, which is almost no different from General plywood with a water swelling rate of <4%.

Eco-Laminates for Built-in  
Quality laminates and veneers with certification of low emissions and



## FITTING



**A**  
HAFELE  
Soft Close

## LIGHTING



LED bulbs throughout, for highest efficiency

- Up to 90% energy saving
- 60-80% energy efficiency over other regular bulbs
- Long Service Lifespan Average LED lasts 50,000-100,000 hours
- Environmental friendly no toxic compounds or elements (Mercury free) and are 100% recyclable



## WASTE WATER

TREATMENT SYSTEM

WATER EFFICIENCY

Water resource management

Collecting Rain Water (Rain harvesting) Used as a replacement for tap water for example:

- Watering of plants throughout the project
- Washing common areas and similar

Gray water:

- Relatively clean waste water, reused for the best benefit
- Shower waste water
- Sink waste water
- Washing waste water



surin sands

# ⑤ SPECIFICATION

## ✧ STRUCTURAL ✧

- Foundation Reinforced Concrete Piling
- Structure Reinforced Concrete
- Floor to Floor Height 3.1 Meters

## ✧ EXTERIOR FINISHES ✧

- Roof Waterproof Coating and shingle roof
- Walls Teca Wall  
Stucco (Cement Rendering) w/ Paint Finish
- Ceilings Gypsum Board (9mm) - Weatherblock
- Floors Balcony: Cotto Tile (40\*30cm) (or equivalent)  
Corridor: Cotto Tile Off-White (60\*60cm)
- Railing Tempered Glass Railing
- Swimming Pool Main Pool: Cotto Porcelain Tile – (4’’\*4’’Inch) (or equivalent)  
1.2 to 1.5 meters / Kids pool 60cm
- Pool Deck Sandwash & Tile (or equivalent)

## ✧ M&E / OTHER ✧

- Electrical Supply 3 Phase Low Voltage
- Electric Equipment Panasonic (or equivalent)
- Water Storage Concrete Reservoirs with Pressure Pump
- Water Treatment Septic Tanks
- Pool Filtration Premium Ozone type Water filtration (or equivalent) (Cepex Astra Pool)
- Air-Conditioning Wall Mounted Air-Conditioning Unit (Size dependant on room)
- Fixtures Haffele (or equivalent)
- Lighting LED Lighting Throughout
- Emergency Electric Generator for Lifts, Common Areas, Water Pumps, Internet
- Elevators Kone (or equivalent)

## ✧ INTERIOR FINISHES ✧

- Walls Living & Bedrooms – Teca Wall with Skim Coat and Paint Finish  
Bathrooms – (30\*60cm) (or equivalent) White Cotto
- Ceilings Gypsum Board (9mm) w/ Paint Finish
- Ceiling Heights Living / Bedroom 2.7 Meters  
Bathroom / Kitchen 2.6 Meters
- Floors Bedroom – (60\*60) King White (or equivalent)  
Bathrooms – Tiles (30\*60cm) (or equivalent)
- Doors Entrance - Hardwood Frame & Door  
Type 2 Bedrooms - Aluminium Glass Door  
Bathroom – Hardwood Frame & Door
- Windows Powder Coated Aluminum w/6mm Glass Panel
- Bathroom Access I-Spa (or equivalent)

## ✧ NOTE ✧

Certain changes of materials and finishing might take place during the construction phase of the Project. It is understood that any modified items shall be either equivalent or superior to what has initially been selected.